

# **ADOBE PHOTOSHOP ELEMENTS 2026 GUIDEBOOK**

**The Complete Step-by-Step  
Guide to Mastering Photo  
Editing, AI Creativity,  
Retouching, and Digital Design**

**ELLIOT VALEWIN**

**Copyright © 2026 by Elliot Valewin**

**All Rights Reserved.**

No part of this publication may be reproduced, distributed, or transmitted in any form or by any means—electronic, mechanical, photocopying, recording, or otherwise—without prior written permission of the author, except for brief quotations used in reviews, academic work, or as permitted by applicable copyright laws.

This book is provided for educational and informational purposes only. While every effort has been made to ensure the accuracy of the information at the time of publication, the author and publisher make no representations or warranties regarding the completeness or reliability of the content and assume no responsibility for errors or omissions. The author and publisher shall not be liable for any damages arising from the use or misuse of the information contained in this book.

All trademarks, product names, and company names mentioned in this publication are the property of their respective owners and are used solely for identification purposes.

# TABLE OF CONTENTS

<b>TABLE OF CONTENTS .....</b>	<b>iii</b>
<b>CHAPTER ONE.....</b>	<b>1</b>
<b>INTRODUCTION TO ADOBE PHOTOSHOP ELEMENTS 2026 .....</b>	<b>1</b>
OVERVIEW OF NEW FEATURES IN THE 2026 RELEASE .....	2
SYSTEM REQUIREMENTS .....	8
INSTALLATION GUIDE .....	9
For Windows Users.....	9
For Mac Users.....	10
Troubleshooting Tips.....	10
TOURING THE MAIN INTERFACE IN PHOTOSHOP ELEMENTS 2026.....	11
UNDERSTANDING THE DIFFERENCE BETWEEN THE ORGANIZER AND THE EDITOR .....	15
The Organizer – Where Everything Begins.....	15
The Editor – Where the Magic Happens .....	15
How the Organizer and Editor Work Together .....	16
Simple Example to Understand Better .....	16
<b>CHAPTER TWO.....</b>	<b>17</b>
<b>ORGANIZING YOUR PHOTOS.....</b>	<b>17</b>
INTRODUCTION TO THE ELEMENTS ORGANIZER .....	17
Key Features .....	17
Ease of Use .....	18
Importing media into the Elements Organizer.....	18
ORGANIZING YOUR WORK: STAR RATING PHOTOS .....	21
ORGANIZING YOUR WORK: PICTURE SEARCH USING METADATA.....	22
ORGANIZING YOUR WORK: KEYWORD TAGGING .....	25
ORGANIZING YOUR WORK: PLACES .....	28
ORGANIZING YOUR WORK: EVENTS.....	29

Name that event.....	31
ORGANIZING YOUR WORK: PEOPLE .....	31
SAVING YOUR FILES .....	34
SAVING VERSION SETS.....	35
<b>CHAPTER THREE .....</b>	<b>36</b>
<b>BASIC PHOTO EDITING TOOLS AND TECHNIQUES .....</b>	<b>36</b>
CROPPING AND STRAIGHTENING IMAGES.....	36
Cropping and Resolution .....	38
Extend the Background .....	39
Straighten a Crooked Photo .....	41
Fixing distortion with the Perspective Crop tool.....	45
CROPPING WITH A SELECTION BORDER.....	47
Recomposing Images.....	47
EMPLOYING ONE-STEP AUTO FIXES .....	49
Auto Smart Fix .....	49
Auto Smart Tone.....	50
Auto Levels .....	51
Auto Contrast .....	52
Auto Haze Removal .....	52
Auto Color Correction.....	53
Auto Sharpen .....	53
Auto Red-Eye Fix.....	54
EDITING IN QUICK MODE .....	55
FIXING SMALL IMPERFECTIONS WITH TOOLS .....	58
CLONING WITH THE CLONE STAMP TOOL.....	58
RETOUCHING WITH THE HEALING BRUSH .....	61
Zeroing in with the Spot Healing Brush.....	63
REPOSITIONING WITH THE CONTENT-AWARE MOVE TOOL.....	65

LIGHTENING AND DARKENING WITH THE DODGE AND BURN TOOLS.....	67
Smudging away rough spots.....	68
SOFTENING WITH THE BLUR TOOL.....	70
SPONGING COLOR ON AND OFF.....	71
REPLACING ONE COLOR WITH ANOTHER.....	72
<b>CHAPTER FOUR.....</b>	<b>75</b>
<b>WORKING WITH LAYERS AND SELECTIONS.....</b>	<b>75</b>
WHAT ARE LAYERS? .....	75
Key Characteristics of Layers .....	75
WHAT ARE LAYER MASKS? .....	76
How Layer Masks Work .....	76
Practical Uses of Layers and Layer Masks .....	76
LET'S TAKE A LOOK AT SOME OF THE FUNDAMENTALS OF LAYERS. ....	77
THE LAYERS PANEL.....	80
Layer opacity .....	81
Merging layers .....	82
Adjustment Layers.....	82
Adjustment Layer Masking .....	84
LAYER MASKING .....	85
ADD TRANSPARENCY WITH LAYER MASKS.....	87
CREATE NON-SQUARE GRAPHICS.....	88
TRANSFORMATIONS: PICTURES IN A PICTURE.....	89
SMART OBJECTS.....	92
TRANSFORMATIONS: CORRECTING PERSPECTIVE .....	93
Warp Transformations: Creating a 3D Shadow.....	96
<b>CHAPTER FIVE.....</b>	<b>98</b>
<b>RETOUCHING AND ENHANCING IMAGES.....</b>	<b>98</b>
REMOVING UNWANTED OBJECTS USING CONTENT-AWARE FILL .....	98

USING THE SPOT HEALING BRUSH TOOL.....	99
USING THE CLONE STAMP TOOL .....	99
SMOOTHING SKIN AND WHITENING TEETH.....	100
Whitening Teeth.....	101
FIXING RED-EYE AND BLEMISHES .....	102
ENHANCING DETAILS AND SHARPENING PHOTOS.....	102
<b>CHAPTER SIX.....</b>	<b>104</b>
<b>GUIDED EDITS, STEP-BY-STEP CREATIVITY .....</b>	<b>104</b>
STEP-BY-STEP CREATIVITY WITH GUIDED EDITS.....	104
Basics .....	104
Color .....	105
Black and White.....	105
Fun Edits .....	105
Special Edits.....	106
Photomerge.....	107
THE MOVE AND SCALE OBJECT GUIDED EDIT .....	108
THE MEME MAKER GUIDED EDIT .....	110
PHOTOMERGE PANORAMA.....	111
Making a multi-deck panorama .....	113
Photomerge Scene Cleaner .....	113
THE ACTION PANEL.....	118
<b>CHAPTER SEVEN .....</b>	<b>120</b>
<b>MASTERING COLOR AND TONE ADJUSTMENTS .....</b>	<b>120</b>
WORKING WITH CURVES, LEVELS, AND COLOR BALANCE .....	120
Levels Adjustment .....	120
Curves Adjustment .....	120
Color Balance Adjustment.....	121
ADDING TINTS.....	122

ADDING GRADIENTS .....	122
CREATING DUOTONES .....	123
CORRECTING COLOR CASTS AND LIGHTING ISSUES .....	124
Fixing Color Casts with Auto Tools .....	124
Using Remove Color Cast (Manual Control).....	124
BALANCING LIGHTING WITH LEVELS OR SHADOWS/HIGHLIGHTS.....	125
FINE-TUNING WITH COLOR VARIATIONS .....	125
<b>CHAPTER EIGHT .....</b>	<b>126</b>
<b>WORKING WITH TEXT AND TYPOGRAPHY .....</b>	<b>126</b>
ADDING AND FORMATTING TEXT IN PHOTOS .....	126
USING TEXT ON A PATH OR INSIDE A SHAPE.....	127
Text on a Path.....	127
Text Inside a Shape.....	127
APPLYING LAYER STYLES AND EFFECTS TO TEXT .....	128
What Are Layer Styles?.....	128
How to Apply Layer Styles .....	128
Quick Tips for Better Text Effects.....	129
COMBINING IMAGES AND TEXT FOR SOCIAL MEDIA DESIGNS.....	129
Planning Your Design.....	129
How to Combine Text and Images .....	129
Design Tips for Social Media Posts.....	130
Example Idea .....	130
CREATING WATERMARKS AND LOGOS .....	130
Steps to Create a Simple Text Watermark .....	130
Saving Your Watermark for Reuse .....	131
Adding Your Watermark to Photos .....	131
CREATING A LOGO IN PHOTOSHOP ELEMENTS 2026.....	131
Steps to Design a Logo.....	131

Making a Transparent Background Logo.....	132
Tips for Creating Good Logos .....	132
Combining Logos and Watermarks .....	132
Example Idea .....	133
<b>CHAPTER NINE.....</b>	<b>134</b>
<b>ADVANCED EDITING AND COMPOSITING .....</b>	<b>134</b>
RETOUCHING: SPOT HEALING BRUSH AND CLONE STAMP TOOLS.....	134
ADVANCED RETOUCHING TECHNIQUES.....	139
LOCAL RETOUCHING: THE BURN, DODGE, AND SPONGE TOOLS.....	145
Local Retouching: The blur, Sharpen, and Smudge brushes .....	150
SIMPLE SELECTIONS: SUBJECT SELECTION .....	152
SIMPLE SELECTIONS: BACKGROUND SELECT.....	154
Simple Selections: Background Select #2.....	157
Simple Selections: Sky Select.....	158
ADVANCED SELECTIONS: SELECTION FEATURES .....	160
Saving Selections .....	160
ADVANCED SELECTIONS: FEATHERING.....	162
ADVANCED SELECTIONS: THE REFINE SELECTION BRUSH TOOL.....	163
ADVANCED SELECTIONS: THE REFINE EDGE TOOL.....	164
ADVANCED SELECTIONS: THE MARQUEE AND LASSO TOOLS.....	165
ADVANCED SELECTIONS: THE MAGIC WAND TOOL.....	170
SIMPLE SELECTIONS: THE QUICK SELECTION TOOL.....	175
THE SELECTION BRUSH TOOL .....	176
THE AUTO SELECTION TOOL .....	176
<b>CHAPTER TEN .....</b>	<b>178</b>
<b>USING THE AI FEATURES IN PHOTOSHOP ELEMENTS 2026.....</b>	<b>178</b>
OVERVIEW OF ADOBE SENSEI AND AI IN PHOTOSHOP ELEMENTS.....	178
Key Features Powered by Adobe Sensei in Photoshop Elements.....	178

Benefits of Adobe Sensei for Photoshop Elements Users.....	179
USING THE AI-POWERED REMOVE TOOL.....	180
WORKING WITH AUTO CREATIONS.....	183
View Auto Creations.....	183
Open an Auto Creation.....	185
Edit an Auto Creation.....	185
Save an Auto Creation.....	186
Quickly share your Auto Creation.....	186
AUTO-CREATING SLIDESHOWS AND COLLAGES.....	186
Creating a Slideshow.....	186
Creating a Collage.....	188
AUTOMATED CURATION AND PHOTO ORGANIZATION.....	189
DEPTH BLUR: ADDING DEPTH-OF-FIELD EFFECTS USING AI.....	190
CREATE MOTION EFFECTS WITH FOUR NEW QUICK ACTIONS.....	190
<b>CHAPTER ELEVEN.....</b>	<b>192</b>
<b>MANAGING AND EXPORTING YOUR WORK.....</b>	<b>192</b>
SAVING YOUR WORK IN DIFFERENT FORMATS.....	192
UNDERSTANDING FILE SIZES AND COMPRESSION.....	193
PRINTING PHOTOS PROFESSIONALLY.....	195
EXPORTING PROJECTS FOR WEB AND SOCIAL MEDIA.....	195
<b>CONCLUSION.....</b>	<b>197</b>
<b>INDEX.....</b>	<b>198</b>

# CHAPTER ONE

## INTRODUCTION TO ADOBE PHOTOSHOP ELEMENTS 2026

Adobe Photoshop Elements 2026 is a friendly and easy-to-use photo editing program made for people who love taking pictures but don't want to deal with the complicated tools found in the full Photoshop software. It gives you the power to edit, organize, and share your photos without needing to be a professional designer. Think of it as a smaller, simpler version of Photoshop that focuses on helping everyday people bring their pictures to life.

The 2026 version of Photoshop Elements comes with a fresh look, faster performance, and smarter tools that make editing easier than ever. Adobe has continued to improve this program each year, adding more artificial intelligence (AI) features that can automatically fix or enhance your photos with just a few clicks. Whether you want to brighten a dull picture, remove unwanted spots, replace a background, or turn a normal photo into something artistic, Photoshop Elements 2026 makes it simple.

One of the best things about Photoshop Elements 2026 is how it balances power and simplicity. It doesn't overwhelm you with too many options. Instead, it guides you step by step with tools that show you what to do, making it perfect for beginners and casual photo editors. The program includes three main editing modes: Quick, Guided, and Advanced.

- **Quick mode** is for fast and simple edits like cropping, color correction, or sharpening.
- **Guided mode** walks you through special effects or advanced techniques, like turning a photo into a painting or creating a double exposure effect.
- **Advanced mode** gives you full control with layers, masks, and advanced brushes if you want to explore deeper editing.

In this new version, Adobe has also improved how photos are organized. The **Elements Organizer** helps you find your pictures faster by using face recognition, tags, and smart search powered by Adobe Sensei (the company's AI system). You can group photos by people, places, or events, and even make slideshows or collages directly from the organizer.

Another exciting part of Photoshop Elements 2026 is the ability to automate boring tasks. For example, it can automatically colorize black-and-white photos, enhance portraits by smoothing skin and brightening eyes, or replace a dull sky with a dramatic one, all without needing to know complicated editing steps. These AI-powered tools are made to save time and help you focus on creativity instead of technical details.

Photoshop Elements 2026 is not just about editing; it's also about sharing. You can easily save your work in different formats, post directly to social media, or print beautiful photo books, calendars, and cards. It also supports cloud integration, which means you can access your projects from different devices and keep them safely backed up online.

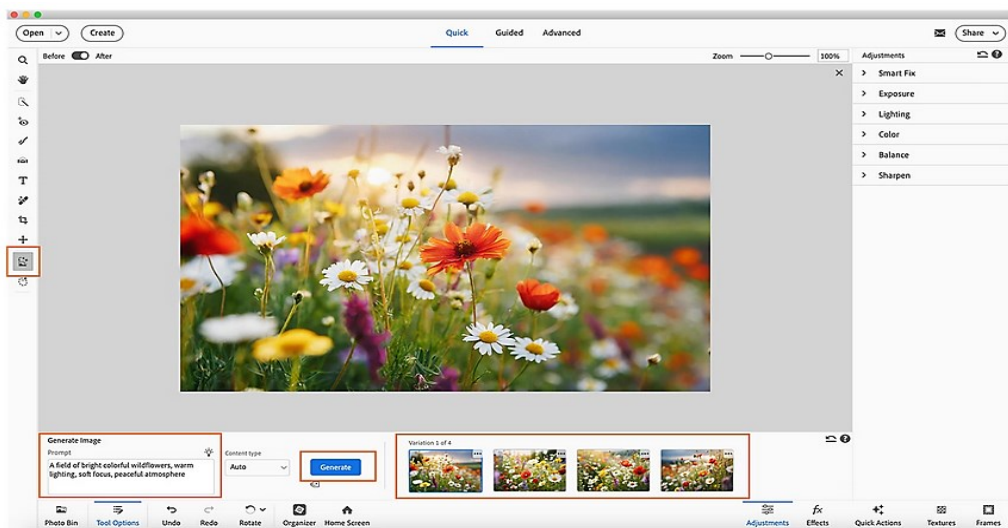
Overall, Adobe Photoshop Elements 2026 is designed for anyone who wants to make their photos look amazing without the stress of learning professional software. Whether you're a beginner learning to edit for the first time, a hobbyist who enjoys photography, or even someone who just wants to improve family pictures, this program gives you everything you need in one easy package.

## OVERVIEW OF NEW FEATURES IN THE 2026 RELEASE

### I. The Generative AI Revolution: New Creative Capabilities

The most impactful and headline-grabbing additions to Photoshop Elements 2026 center around the incorporation of sophisticated **Generative AI**, bringing capabilities previously exclusive to the subscription-based, professional Photoshop to the standalone Elements platform.

#### A. Generative Image Creation (Text-to-Image)

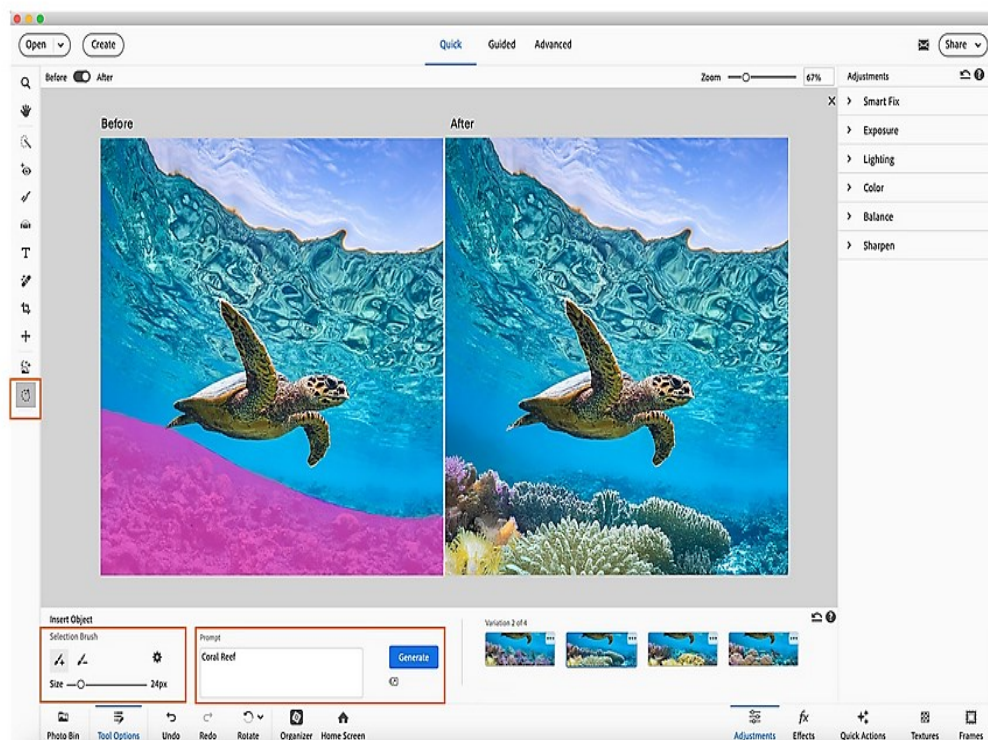


- **Feature Description:** This is a completely new tool that allows users to create an image from scratch simply by typing a descriptive text prompt (a process known as "text-to-image"). This is ideal for generating conceptual backgrounds, unique textures, or fantastical elements to be used in composite images.
- **User Impact:** It effectively transforms the user from a photo *editor* into a photo *creator*. A user no longer needs to hunt for the perfect stock photo; they can instantly generate a specific, custom visual element that perfectly matches their vision.

To use this feature, follow the given steps:

1. Select the **Generate Image** tool from the Toolbar.
2. **Type** a prompt to describe the image that you want to generate.
3. Tap on the **Generate** button to generate the image.
4. Click on one of the four variations generated to preview and use.

## B. Generative Object Insertion (Insert Object)



- **Feature Description:** Building on the generative image tool, the **Insert Object** feature allows a user to select an area of an existing photo (e.g., a blank tabletop, a section of wall, or a patch of grass) and then use a text prompt to have a new, contextually-aware object rendered directly into that space.
- **User Impact:** This is immensely powerful for photo compositing. For example, you can brush over a park bench and type "a glowing glass lantern" to have the AI seamlessly add it, complete with appropriate lighting and shadows, vastly simplifying the process of adding elements that blend realistically.

To use this feature, follow the given steps:

1. Select the **Insert Object** tool from the Toolbar.
2. Use the **Selection Brush** to paint over your image where you want to insert an object.
3. **Type** a prompt to describe the object you want to insert in the selected area.
4. Click on the **Generate** button to generate & insert the object.
5. Click on one of the four variations generated to preview and use.

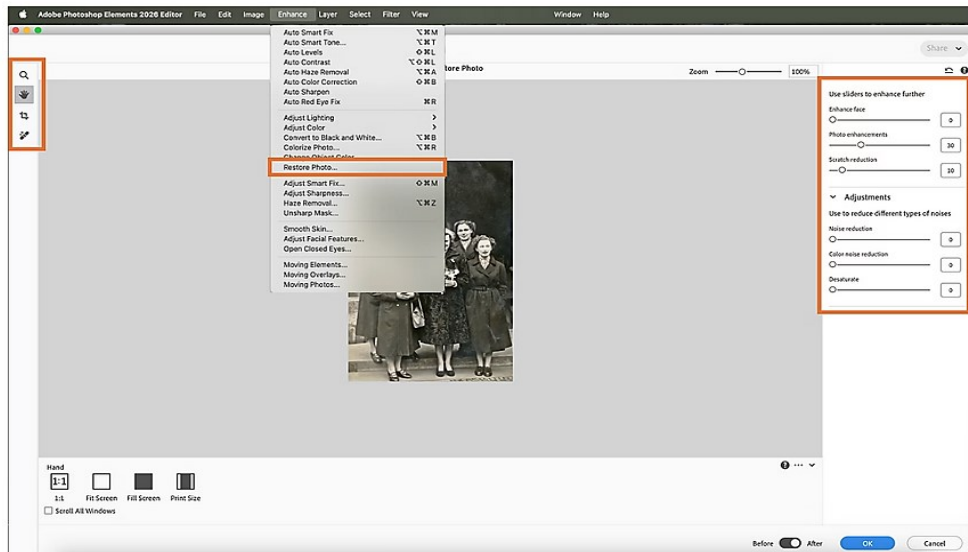
### C. Generative Credits System

- **Critical Context:** To manage the computational cost of these new text-to-image and object insertion features, Adobe has introduced a complimentary **Generative Credits** system. While Photoshop Elements remains a one-time purchase, these advanced AI features will consume a set number of included credits that renew monthly. This is a significant business model nuance that users must understand.

## II. AI-Powered Repair and Cleanup Enhancements

The focus of Photoshop Elements has always been on quick, impressive fixes. The 2026 version leverages the latest AI models to turn previously time-consuming retouching tasks into near-instantaneous, one-click operations.

### A. AI-Powered Photo Restoration

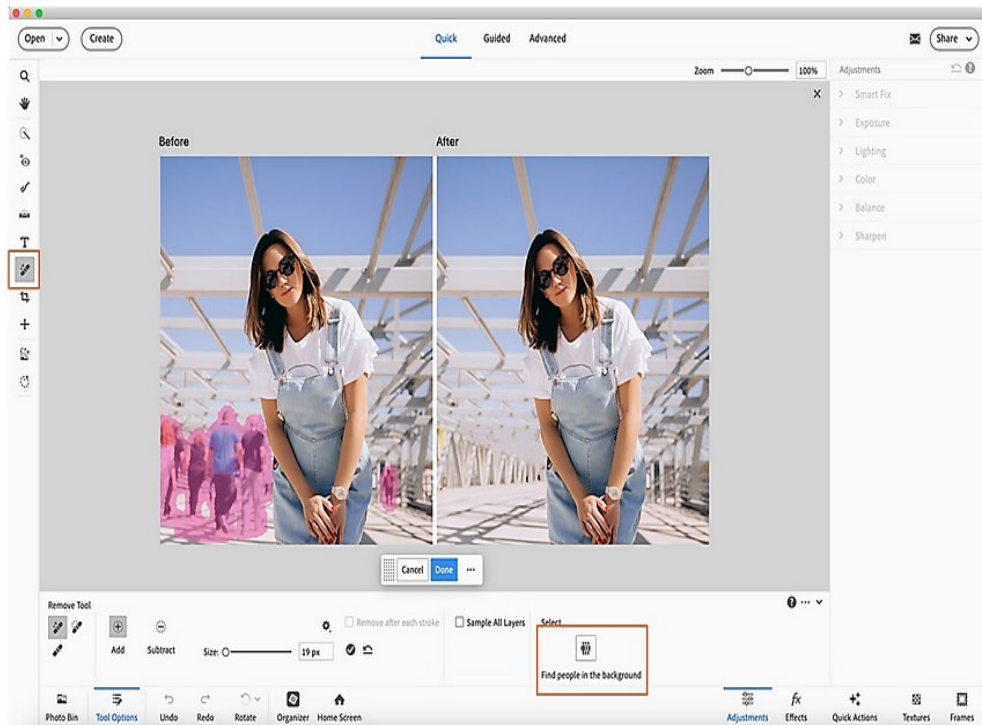


- **Feature Description:** A brand-new one-click feature called **Restore Photo** utilizes AI to intelligently repair damage in scanned or old, printed photographs. It automatically detects and works to eliminate:
  - Scratches and creases.
  - Dust spots and blemishes.
  - General wear and tear.
  - Faded color correction (in some cases, depending on the model).
- **User Impact:** This dramatically streamlines the process of digitizing family archives. Instead of using the Healing Brush or Clone Stamp Tool on every tiny imperfection, the AI does the heavy lifting, allowing the user to simply fine-tune the result.

To use this feature, follow the given steps:

1. Select **Enhance > Restore Photo...**
2. Scratches, creases, wear, and tear automatically get removed from the photo.
3. Use the **sliders** to further enhance the restored photo.
4. Tool options like **Zoom, Hand, Crop,** and **Remove** are available in the toolbar to get the best output.

## B. Enhanced AI Remove Tool (People Distraction Removal)



- **Feature Description:** The existing Remove tool has been upgraded. It now uses improved, contextual AI to **automatically detect and select people in the background** of a photo, allowing for their immediate, seamless removal.
- **User Impact:** This is a massive time-saver for candid, travel, or street photography, where unwanted "photobombers" are a frequent issue. The AI's improved contextual awareness helps fill the vacated space with realistic background textures, making the removal nearly invisible.

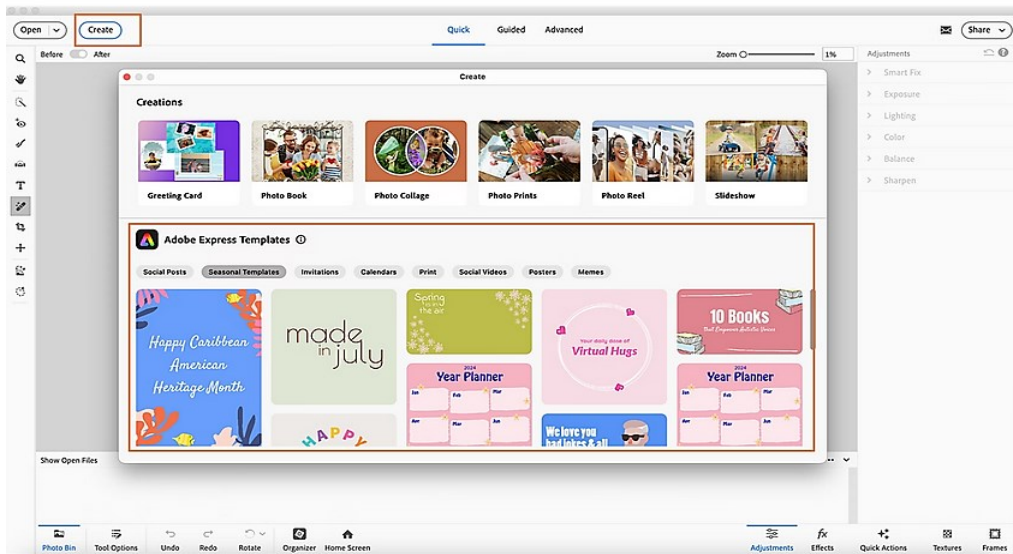
To use this feature, follow the given steps:

1. Open photo and select the **Remove Tool**.
2. In the tool options panel, click **Find people in the background**.
3. AI detects and highlights background figures.
4. Use **Add/Subtract** for refinement.
5. Click **Done** on the contextual toolbar to apply.

### III. Workflow, Usability, and Integration Improvements

Beyond the major AI features, the 2026 release includes numerous "quality-of-life" updates that enhance the overall user experience, organization, and connectivity.

## A. Adobe Express Integration



- **Feature Description:** The application now features tighter integration with **Adobe Express**, a separate, template-based design tool. This provides users with instant access to a vast library of free, professionally designed templates for:
  - Social media posts (e.g., Instagram Stories, Facebook covers).
  - Greeting cards and invitations.
  - Photo books and collages.
- **User Impact:** It bridges the gap between editing a raw photo and presenting it creatively on social media or in print. Users can perfect their image in Elements and then immediately drop it into a stylish, pre-made Express layout.

## B. Simplified Photo Import and Organization

- **QR Code Scanning for Mobile Import:** Users can now scan a QR code generated within the desktop application to instantly import photos directly from their smartphone camera roll. This eliminates the need for cables, cloud syncing setup, or manual file transfers.
- **Cloud Service Quick Import:** The Organizer has been enhanced to allow for quicker and more direct import and access to media stored on popular cloud services like **Google Drive** and **OneDrive**.

- **Organizer Enhancements:** Small, but significant tweaks have been made to the Organizer, including easier access to full-screen viewing and zoom controls for faster photo review and culling.

### C. User Interface and Tool Enhancements

- **Rich Visual Tooltips:** To cater to the beginner and intermediate users (the core audience of Elements), the application now features more dynamic and informative **Visual Tooltips** with built-in animations. These hints appear when hovering over a tool, explaining its function and guiding the user on its use, improving the self-learning curve.
- **Optimized Crop Tool:** The crop handles and tools have been modernized and optimized for a more intuitive framing experience, which is a foundational editing task.
- **Contextual Taskbar:** The toolbar now adapts dynamically based on the specific task the user is performing, presenting the most relevant options upfront and reducing on-screen clutter.
- **Built-in Spell Checker:** For all text-based creations, such as photo captions, titles, or graphics, a spell checker has been integrated to ensure professional presentation.

## SYSTEM REQUIREMENTS

Before you install Photoshop Elements 2026, your computer needs to meet certain conditions so that the program can run smoothly. If your computer is too old or weak, the software may lag or crash, especially when working with big photos or advanced tools.

For **Windows users**, your computer should have at least an Intel 8th Generation processor or a similar AMD processor that supports AVX2 and SSE4.2 technology. You need Windows 11, 64-bit version (the newer, the better).

The memory, or RAM, should be at least 8GB, but 16GB will make the program run faster and smoother, especially when editing large files. You also need at least 9GB of free space on your hard drive to install the software. However, using an SSD (Solid State Drive) is highly recommended because it makes the program load and save faster.

For the display, your screen should have a resolution of at least 1280 by 800 pixels, but higher resolutions like 1920 by 1080 give a more comfortable and clearer view. A graphics card (GPU) with at least 1.5GB of memory that supports DirectX 12 is

needed to handle AI-powered features. You'll also need internet access to activate the program, download updates, and access online content.

For **Mac users**, Photoshop Elements 2026 works on Apple Silicon chips (M1, M2, M3) and Intel 8th Generation processors or newer. The operating system must be macOS 14 (Sonoma) version 14.4 or newer, or macOS 15 (Sequoia) version 15.5 or later. Just like Windows, you should have at least 8GB of RAM, though 16GB will give you better performance.

You need 8GB or more free space on your disk, and it's best to install the app on an SSD or Apple's internal drive for speed. The display should be at least 1280 by 800, but higher resolution screens will give clearer image previews. An internet connection is required for activation and online updates.

In simple terms, if your computer is from the last few years and runs the latest Windows 11 or macOS version, you should have no problem using Photoshop Elements 2026. Just make sure you have enough memory, a good processor, and some free space.

## INSTALLATION GUIDE

Before you begin, make sure your computer meets the requirements above. Close all other programs and ensure your internet connection is stable. If you have an older version of Elements, you can keep it or uninstall it before installing the new one. It's also a good idea to back up your files, just in case something goes wrong.

### For Windows Users

1. **Download the Installer:** If you bought the software online, you'll receive a link or a file to download. If you bought a physical copy, it might come with a DVD or USB drive.
2. **Run as Administrator:** Once downloaded, right-click on the installer file and choose "Run as administrator." This ensures the program installs with full permission.
3. **Follow the Setup Steps:** The installation window will appear. Read and agree to the license terms, then choose where to install the software. It's fine to leave it at the default location unless you want to install it elsewhere.
4. **Include Optional Features:** During setup, you may see options to install extra templates, backgrounds, or the Elements Organizer. You can select them now or add them later.
5. **Finish and Restart:** When the installation is complete, you might be asked to restart your computer. Restarting helps the program set up correctly.

6. **Activate the Program:** Open Photoshop Elements 2026 for the first time. You'll be asked to sign in with your Adobe ID (or create one if you don't have it). Enter your product key or serial number to activate it.
7. **Install Updates:** Go to the Help menu inside the app and click "Updates" to download the latest patches. This helps fix bugs and adds improvements.
8. **Adjust Your Settings:** After installation, open the Preferences menu and choose your scratch disk (where temporary files are stored). If you have a graphics card, make sure hardware acceleration is turned on for better performance.

### For Mac Users

1. **Download the Installer:** You'll receive a link or a file in .dmg or .pkg format. Double-click it to start the process.
2. **Allow Installation if Blocked:** macOS may warn you that the app is from an unidentified developer. Go to "System Settings," then "Security & Privacy," and click "Allow" to continue.
3. **Follow the Setup Instructions:** Read and accept the license agreement. Choose the Applications folder as the installation location.
4. **Sign In and Activate:** Once installed, open Photoshop Elements 2026. You'll be asked to sign in with your Adobe ID and enter your serial number.
5. **Update the Program:** After signing in, check for updates in the Help menu and install them to ensure the app runs at its best.
6. **Adjust Your Preferences:** Open Preferences and set your memory use, scratch disk, and other options to match your system's strengths.
7. **Test the Program:** Open an image and try a few edits to make sure everything works correctly.

### Troubleshooting Tips

If installation fails or the program crashes during setup, restart your computer and try again. Make sure you have enough free space on your drive and that your internet is working properly. If you're using Windows, right-click the installer and select "Run as administrator" again. If you're using a Mac, make sure the installer is allowed in your security settings.

Sometimes antivirus software or firewalls can block the installation, so temporarily turn them off and try again. If you still have trouble activating, check your internet connection or log in again using your Adobe ID.

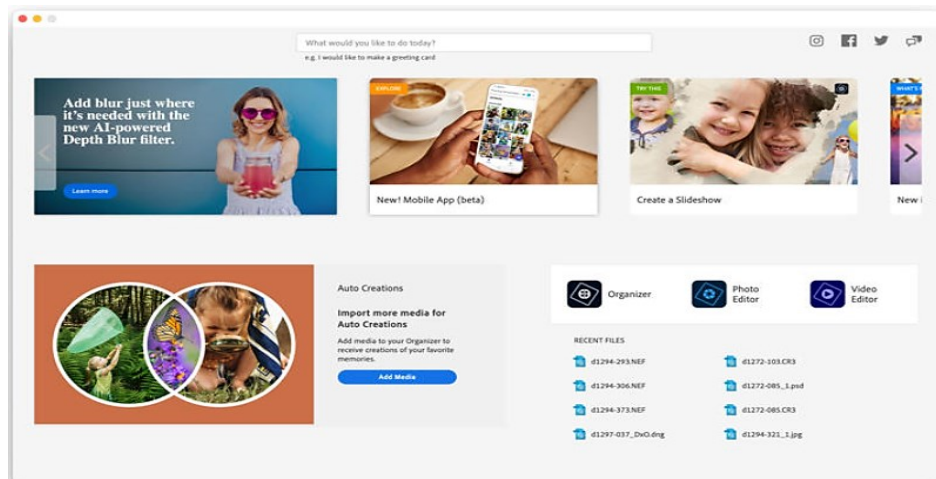
# TOURING THE MAIN INTERFACE IN PHOTOSHOP ELEMENTS 2026

## 2026

When you first open Adobe Photoshop Elements 2026, you'll notice that the program is designed to feel friendly and comfortable, even if you've never used an editing tool before. The layout is simple and well-organized, with everything placed in a way that helps you get started quickly. The 2026 version continues Adobe's tradition of keeping things easy for beginners while still offering powerful tools for those who want to dig deeper.

### 1. The Home Screen

The Home Screen is the first thing you see when you open Photoshop Elements 2026. Think of it as the main dashboard or the welcome page that helps you get to where you want to go. The layout is clean, bright, and easy to navigate.



At the top, you'll see big buttons for Photo Editor, Video Editor, and Organizer. If you just want to edit pictures, you'll click on *Photo Editor*. If you have Adobe Premiere Elements installed too, you'll be able to switch over to edit videos.

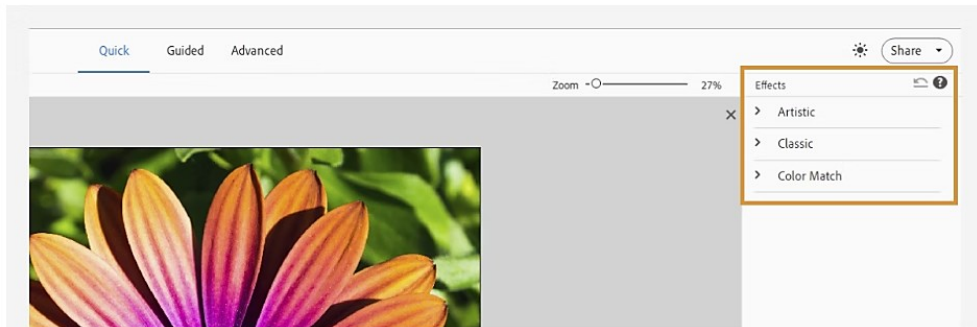
On the home page, Adobe also includes helpful panels that suggest what you might want to do next. For example, you'll see options like Create a Slideshow, Make a Collage, or Enhance Your Photos. You can also find short tutorials, known as *Auto Creations*, that show examples of what you can do with your photos, like turning them into art, fixing lighting, or creating fun photo effects.

In Photoshop Elements 2026, the home screen also gives you access to Adobe's AI-powered tools, such as photo restoration, background replacement, or the new *Generate Image* feature. There's also a section that shows your most recent projects, so you can quickly return to where you left off.

At the bottom, you'll find Settings and Help options, along with a link to your Adobe account. The home screen is like your personal command center; it's the perfect starting point before diving into editing.

## 2. Quick Mode

Once you open a photo in the editor, you'll notice there are three main editing modes at the top: Quick, Guided, and Advanced.



**Quick Mode** is the simplest one. It's designed for people who just want to fix their photos fast without worrying about technical details. The workspace is clean and uncluttered, showing your photo in the center and basic editing tools on the right-hand side.

You'll find sliders and buttons for simple tasks such as **brightness**, **contrast**, **color**, **sharpness**, and **crop**. Everything you need is clearly labeled. You can make small changes like removing red-eye, straightening the photo, or fixing the exposure.

There are also one-click **Auto buttons** that let the software decide the best settings for your picture. For example, clicking *Auto Smart Fix* will balance color and lighting instantly. You can adjust the result with sliders if you want more control.

At the bottom, you'll see different **views**: Before and After. This lets you compare your edited photo with the original to see the difference your changes made.

Quick Mode is perfect for beginners or when you just need to touch up a picture before posting it online or printing it. It saves time and gives good results without confusion.

## 3. Guided Mode

The **Guided Mode** is like having a teacher beside you while you edit. This mode takes you step by step through fun and creative projects. It's perfect if you're still learning or want to try new effects but don't know where to start.